

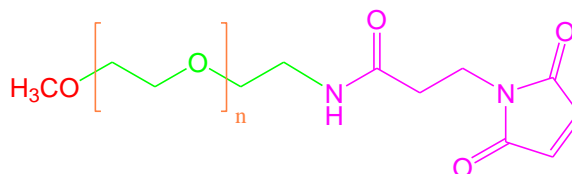
# Product Information

## Methoxypoly(Ethylene Glycol) Maleimide

**Product Number: 1101150**

### Synonyms

Maleimide-Terminated Methoxypoly(Ethylene Glycol)  
mPEG Maleimide



### Specifications

CAS Number: 99126-64-4

M.W. (Repeat Unit): 2,000 – 2,150 g.mol<sup>-1</sup>

Appearance (Form): Powder

Appearance (Color): White to Faint Yellow

Proton NMR Spectrum: Conforms to Structure

Store: at Room Temperature

Substitution: ≥ 95 %

Solubility (Water): Soluble

Solubility (Turbidity): Clear

### Description

Methoxypoly(Ethylene Glycol) Maleimide (mPEG-maleimide) is a synthetic polymer and widely used in bioconjugation chemistry and biomedical research due to its biocompatibility and selectivity. It is non-toxic and chemically-stable in both organic and aqueous media. The mPEG-maleimide has been introduced to “Click PEGylate” sulfhydryl groups with high efficiency and selectivity without decrease of bio-activity. It is highly reactive towards the sulfhydryl groups of polypeptides and proteins.

### Applications

mPEG-maleimide is used as a polypeptide or protein pegylation reagent. Through PEGylation, the chains of PEG polymer are covalently attached to other chemical or biological molecules.

### Precautions

For laboratory and research use. Not for drug, household or other uses.

### Stability

At refrigerator, the mPEG-maleimide powder is stable for at least 3 months. Storage of the stock mPEG-maleimide at room temperature for more than 1 week may cause decomposition and yield incorrect results.

### Packaging

1 g in glass bottle