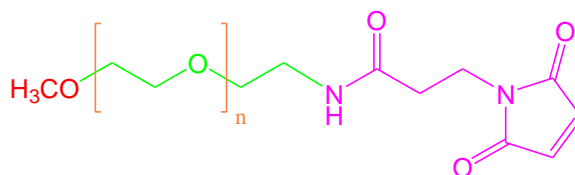


# Product Specification

|                            |  |
|----------------------------|--|
| <b>Product Name</b>        | <b>Methoxypoly(Ethylene Glycol) Maleimide<br/>Maleimide-Terminated Methoxypoly(Ethylene Glycol)<br/>mPEG Maleimide</b> |
| <b>Product Number</b>      | <b>1101150</b>   |
| <b>CAS Number</b>          | -  |
| <b>MDL</b>                 | -  |
| <b>M.W.</b>                | <b>2000 - 2150 g.mol<sup>-1</sup></b>  |
| <b>Compound CID</b>        | -  |
| <b>Storage Temperature</b> | <b>Room Temperature</b>  |
| <b>Manufacture Date</b>    |  |



| <b>Test</b>                      | <b>Specification</b>         |
|----------------------------------|------------------------------|
| <b>Appearance (Form)</b>         | <b>Powder</b>                |
| <b>Appearance (Color)</b>        | <b>White to Faint Yellow</b> |
| <b>Proton NMR Spectrum</b>       | <b>Conforms to Structure</b> |
| <b>Substitution</b>              | <b>≥ 95 %</b>                |
| <b>Solubility</b><br>(Water)     | <b>Soluble</b>               |
| (Common Organic Solvents)        | <b>Soluble</b>               |
| <b>Solubility (Turbidity)</b>    | <b>Clear</b>                 |
| <b>Recommended Retest Period</b> | <b>180 days</b>              |